



Michigan
Vernal Pools
Partnership

THE POOL REPORT

2022 | Special Issue



Special Announcement

Brought to you by [the Michigan Vernal Pools Partnership](#)

Capturing the Vernal Pool Phenomenon



Video Showcases Spring Magic Show

A truly remarkable natural phenomenon occurs in woods and forests across the state as spring arrives. But the window to experience this incredible nature show is short and easily missed. With the release of a new video called ["Ephemeral"](#), the Michigan Nature Association (MNA) gives all viewers a look into this vital and fleeting watery world of vernal pools.

"Ephemeral" captures the magic and importance of these small but mighty ecosystems, as well as the seldom-seen animals that rely on vernal pools to

breed such as fairy shrimp, wood frogs, spotted salamanders, and blue-spotted salamanders.

“We want people to know how important these unassuming ‘puddles of water’ are to a healthy forest ecosystem,” says Garret Johnson, Executive Director of the [Michigan Nature Association](#), one of the lead partners of the [Michigan Vernal Pools Partnership](#). “More than that, people can help protect vernal pools once they learn more and understand their ecological value. The video helps do just that so we are very excited to share it.”

Vernal pools are small wetlands that fill with water in the spring (hence vernal) and regularly dry up. The pools are usually small, shallow, and isolated from other wetlands and waterbodies, proving to be vital nurseries for an unusual suite of animals that depend on these “vernal pools” for all or part of their lifecycles. They are known as “nature’s nurseries” or even the “coral reefs of Northeastern forests” because the absence of fish predators ensures breeding success for certain types of frogs and salamanders. But vernal pools are not currently protected through state and federal wetland regulations.

In order to tell this incredible story, MNA, a nonprofit conservation organization, commissioned [Fauna Creative](#), an award-winning videography team, to produce the short video on behalf of the Michigan Vernal Pools Partnership (MVPP). The MVPP is a statewide public/private partnership that unites state and federal agencies, nonprofit organizations, businesses, and interested individuals to increase awareness, understanding, and protection of vernal pools.

Besides “Ephemeral”, more information about vernal pools and ways people can help protect them can be found at mivernalpools.com, the website of the MVPP, including a link to the Michigan Vernal Pool Patrol, a citizen/community science opportunity for individuals, teachers and students, and organizations to help map and monitor vernal pools across the state.

MNA would like to thank the MVPP, Michigan Natural Features Inventory, and Pierce Cedar Creek Institute for their contributions to telling this story, and the award-winning videography team of Fauna Creative for producing this incredible video.

Learn More

[Link to “Ephemeral” Video](#)

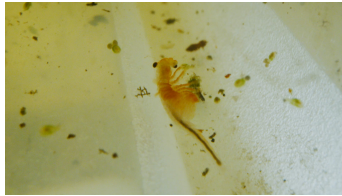
[Michigan Nature Association](#): Established in 1952 and celebrating its 70th Anniversary, the Michigan Nature Association is a non-profit conservation organization that works to protect rare and endangered species and imperiled natural communities through land protection, environmental education, research partnerships, and collaboration. MNA holds more than 180 nature sanctuaries across the state, from the northern tip of the U.P. to the Indiana/Ohio border.

[Michigan Vernal Pools Partnership](#): A public/private partnership dedicated to increasing awareness, understanding and protection of vernal pools through conservation, research & mapping, education & outreach, and collaboration.

The MVPP also publishes a quarterly eNewsletter, The Pool Report, and holds an annual partnership meeting attended by hundreds of vernal pool enthusiasts from Michigan and other states.

[Michigan Vernal Pool Patrol](#): The Vernal Pool Patrol is a citizen/community science program coordinated by the Michigan Natural Features Inventory, a lead partner of the Michigan Vernal Pools Partnership. The program provides training and connects community scientists across the state to enhance information and knowledge about vernal pool status, distribution, and ecology in Michigan.

[Fauna Creative](#): Award winning visual storytellers based in Grand Rapids, Michigan.



Counterclockwise from upper left (or top to bottom on mobile): Fairy shrimp, vernal pool at Pierce Cedar Creek Institute, blue spotted salamander. Photos from "Ephemeral"/Fauna Creative.

News & Notes

Other news you might be interested in:

- [Watch the MVPP events calendar for upcoming vernal pool workshops.](#)

From other states:

- Want to get kids involved in vernal pools? [Check out the great resources from Maine's "Of Pools and People" vernal pool program.](#)
- "Big Night" Amphibian Migrations & Conservation Efforts in New Hampshire:
 - <https://lebanonnh.gov/1458/Amphibian-Crossing-Program>
 - <https://harriscenter.org/programs-and-education/citizen-science/salamander-crossing-brigades>

- https://www.washingtonpost.com/national/health-science/roadblock-ahead-amphibian-crossing/2019/05/10/1dc8c55a-6d0b-11e9-8f44-e8d8bb1df986_story.html
- New York State Department of Environmental Conservation Vernal Pool & Amphibian Migrations Webinar Series – recordings available at:
 - <https://www.dec.ny.gov/lands/120539.html>
- Influence of the Covid-19 Pandemic on Amphibian Road Mortality
 - <http://www.vernalpools.me/wp-content/uploads/2021/10/csp2.5353.pdf>

Connect with us:

Vernal Pools Partnership

- Julie Stoneman – jstoneman@michigannature.org

Vernal Pool Patrol

- Yu Man Lee – leeyum@msu.edu
- Courtney Ross – rosscour@msu.edu

MVPP

Pool Patrol

MNFI

MNA

*The mission of the **Michigan Vernal Pools Partnership**, a public/private partnership, to increase awareness, understanding and protection of vernal pools through conservation, research & mapping, education & outreach and collaboration.*

*The **Vernal Pool Patrol** is a statewide program for community scientists and educators who want to learn more about these fascinating wetlands, participate in science and conservation, and enjoy spending time outside in nature! Members learn how to follow a standard protocol to help identify and map locations of vernal pools within their local communities.*

***The Pool Report** is a publication of the [Michigan Nature Association](#) on behalf of the Michigan Vernal Pools Partnership.*



Michigan
Vernal Pools
Partnership

Michigan Vernal Pools Partnership

mivernalpools.com

If you would like to stop receiving emails from the MVPP, unsubscribe using the link below.



[Unsubscribe](#)

mailerlite